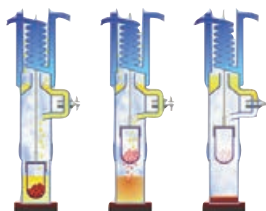


SER 148 SOLVENT EXTRACTOR

The **SER 148/3** and **SER 148/6** can be used to separate a substance or a group of elements (e.g. fat) from solid and semi-solid samples according to the **Randall technique** (consisting of Immersion, Washing and solvent Recovery).

The SER 148 Series is a semi-automatic solution with no compromises on **operator safety (IP55)** and **solvent consumption** also guaranteeing a **limited cost per analysis**.

Robust design and large install base make the SER 148 Series the reliable choice for any laboratory aiming at reducing the time per analysis compared to the traditional Soxhlet method. As for the automatic version, the main field of application is the determination of the content of soluble products such as fats, detergents, plasticizers and pesticides in food, animal feeds, detergents, rubber and plastic formulas, pharmaceutical products, soil.



RANDALL TECHNIQUE

The first phase of extraction is performed by immersing a sample - containing thimble in boiling solvent followed by a washing with cold refluxing solvent. The fast solubilization achieved by the hot solvent results in a sharp reduction of extraction time.

CONSUMABLES

CODE No

Extraction thimbles 33x80 mm, 25 pcs/box **A00000295**



SUPPLIED WITH

CODE No

Extraction Cups SER 148/3	A00001141
Extraction Cups SER 148/6	A00000142
Extraction Thimbles 33X80, 25pcs/box	A00000295
Inlet Tube	10000280
Heat Shield SER 148/3	40000210
Heat Shield SER 148/6	40000220
Viton seal SER 148 3pcs/box	A00000307
Butyl seal SER 148 3pcs/box	A00000308

OPTIONAL ACCESSORIES

CODE No

Printer	A00001009
Serial cable	A00000011
Thimble weighing cup	A00001146
Vafion seal SER 148 3pcs/box	A00000061
IQ/OQ SER 148 Manual	A00000073
Handling device for extraction cup (for SER 148/6)	A00001145
Pincer for weighing cups (for SER 148/6)	A00001147
Thimbles stand (6 places)	A00001149
Extraction thimbles holder	A00001142
Crucible holder HU6 for SER148	A00000309
Glass fiber thimbles 33x80, 25pcs/box	A00000313
Oat meal, 30g	A00000318

INSTRUMENT

POWER SUPPLY

CODE No

SER 148/3	230 V / 50-60 Hz	F30300240
SER 148/3	115 V / 50-60 Hz	F30310240
SER 148/6	230 V / 50-60 Hz	F30300242
SER 148/6	115 V / 50-60 Hz	F30310242

SER 148/6



SER 148/3



GENERAL FEATURES AND PERFORMANCE

CONSTRUCTION MATERIAL	Epoxy painted stainless steel structure
MAX VOLUME EXTRACTION CUP	150 ml
DISPLAY	Working temperature / settable parameters
WORKING TEMPERATURE	From 100 to 260 °C
IMMERSION, WASHING & RECOVERY TIME	From 0 to 999 minutes
SAMPLE QUANTITY	From 0.5 to 15 g (generally 2-3 g)
SOLVENT RECOVERY	From 50 to 75%
REPRODUCIBILITY (RSD)	≤ 1%
INTERFACE	RS232
POWER	500 W (SER 148/3) or 950 W (SER 148/6)
DIMENSIONS (WxHxD)	480x620x390 mm (18.9x24.4x15.4 in) (SER 148/3) 700x620x390 mm (27.6x24.4x15.4 in) (SER 148/6)
WEIGHT	30 Kg (66 lb) (SER 148/3) 40 Kg (88 lb) (SER 148/6)